

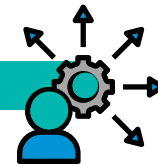
TOP TIPS FOR TEACHING WITH

dataplanet

A SAGE Publishing Resource

✓ ADDRESS DATA LITERACY

Data fluency will vary person-by-person, class-by-class. Make sure students access the [Data Basics](#) reference content to refresh themselves on finding and evaluating datasets and sources, interpreting statistics and visualizations, and more.



✓ HIGHLIGHT IN SYLLABI

Example language to include:

We will be using Data Planet in this class. To get the most from this database, please check out the Data Basics content available on the website. To access Data Planet, visit the [Institution name] library website.



✓ INTEGRATE INTO COURSES

Data Planet supports your students on their data literacy journeys. Suggested ways to incorporate Data Planet into your instruction include:

- Promote information literacy by asking students to verify data by conducting additional research on the source, update frequency, and technical documentation of a dataset.
- Send students to the "[Understanding Statistical Terminology](#)" section of the Data Basics reference library to locate a term with which they are unfamiliar. Then, ask them to define the term in their own words and share in class or post to an online discussion board.
- Ask students to find a dataset available in two or more visualization formats (map, trend, pie, or rank) and compare how the different visualizations impact their ability to understand what is being represented.



✓ DEVELOP COURSE RESOURCES

Data Planet offers a variety of ways to make it easy for you to integrate data into your courses.

- Visualize data in multiple formats, including tables, charts, maps, and graphs.
- Export data in standard formats, including Excel, PDF, XML, SAS, and more.
- Embed interactive Data Planet content in your learning management system, either as dynamic (updated with new data as Data Planet updates) or static (data remains the same as when embed was created).
- Create DOIs back to your static view (via Data Sheets), including links to the underlying data, which can be shared and viewed by anyone, even those without authenticated access to Data Planet.
- Use Copy Link to Dataset to provide a permanent URL to views and/or associated data.



✓ AID STUDENTS WITH DATA TOOLS

Data Planet provides tools within the platform to enable researchers and students to create new data.

- Encourage students to add fresh insight to their research topics by using the [Calculator tool](#) to create derived data columns.
- Ask students to use the Compare functionality to compare two datasets and provide you a DOI link to their visualization.



✓ CONNECT WITH DATA PLANET

Data Planet is responsive to the needs of our users. Suggestions on datasets to add to the Data Planet repository are welcome. If you have suggestions for new tools, for additions to "Data Basics," or for any part of Data Planet, please email us at onlinesupport@sagepub.co.uk.

